



DURATRAY



Company Overview

Duratray International Group has more than 49 years of experience in the mining and construction industry.

Duratray is a global designer and manufacturer of high-efficiency mining truck's dump bodies.

Currently, there are over **2,000 Duratray dump bodies** operating globally, ranging in size from 40 to 400 tones for all major truck manufacturers.

www.duratray.com





➤ 2019 Governor of Victoria Export Award (GOVEA) for *Minerals, Energy & Related Services*

➤ 2018 Australia-Latin America Business Council (ALABC) Recognition Award for *18 years of Global Business Expansion*

➤ 2017 *First Large- Scale Chilean Investment in Australia* Award by the Australian Government

➤ 2015 Victorian Manufacturing Hall of Fame Award for *Manufacturing Excellence*

➤ 2010 Governor of Victoria Export Award (GOVEA) for *Minerals and Energy*



Global Operation

Duratrax International Group operates and delivers its services and products to 37 countries, such as:

USA

UK

Canada

Australia

South Africa

China

Brazil

Congo

Zambia

Mongolia

Ukraine

Angola

Philippines

Israel

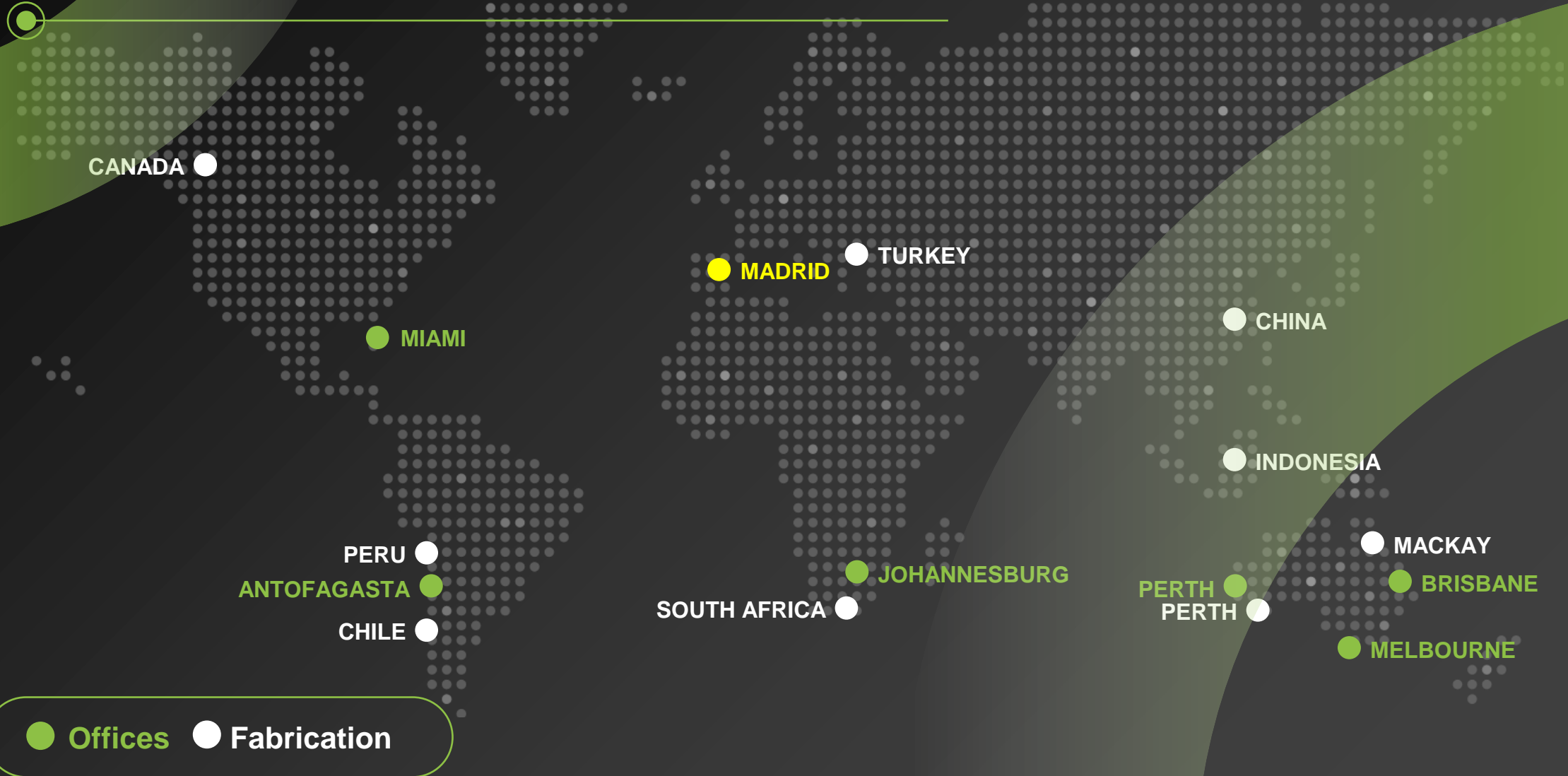
Sweden

Germany

Among others

Global Presence

Duratray International Group



Global Presence Duratray International Group



DOMINION DIAMOND EKATI- CANADA



KONIAMBO - NEW CALEDONIA



WORSLEY - AUSTRALIA



BLOOM LAKE - CANADA



DIAMIK - CANADA



VIGIER CEMENT- SWITZERLAND



ISIBONELLO - SOUTH AFRICA



LIHIR GOLD - PNG



NA PALLADIUM CANADA



PASCUA LAMA - CHILE/ARGENTINA



SUEK COAL- RUSSIA



KUMTOR GOLD- KYRGYZSTAN

Global Presence Duratray International Group



KOMATSU 930 GRUPO MEXICO -TOQUEPALA



CATERPILLAR 793C DOWNER EDI - COAL



HAULMAX 3900D EKATI - DIAMONDS



KOMATSU HD-785-7 KONIAMBO - NICKEL



CATERPILLAR 785 MANTOS BLANCO -GOLD



KOMATSU 985 OM - MANGANESE



CATERPILLAR 785 NEWCREST - GOLD



KOMATSU 930 BARRICK - SILVER/GOLD



CATERPILLAR 777F OLIZKI - PHOSPHATES



CATERPILLAR 785 BHP - ALUMINIUM



CATERPILLAR 740B MINERA PANAMA



KOMATSU HM 400 NEW VAAL - COAL



NEXUS MINE

Smart Tray 4.0





NEXUS MINE

Company Overview

We specialize in the design and engineering of technologies that bring **the industrial revolution 4.0** to mining and construction equipment, enabling users to improve their **productivity** and to monitor their **quality, environmental and safety performance**

www.nexusmine.com.au



Smart Tray 4.0. Modules



**Cycle
Analytics**



**Asset
Management**



**Live
Vision**

NEXUS MINE 🔍 🏠 🔔 👤 username@account.com

Navigation: Home, Map, Summary Dashboard, Cycles analytics, Asset Management, Live Vision, Settings, Logout

Date Range: 01/09/2022 - 02/09/2022 | Fleet: CAT 77F | Truck#: TK043

12 # Cycles	00:23m Avg. Cycle Time	1,7Km Avg. Distance per cycle	1st Operational Performance	12th Availability Performance
-----------------------	----------------------------------	---	---------------------------------------	---

20.87 Avg. Cycles per day	06:57am Avg. Starting Time	16:03pm Avg. Ending Time
-------------------------------------	--------------------------------------	------------------------------------




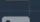
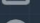
Availability %
91%

Utilization %
42%

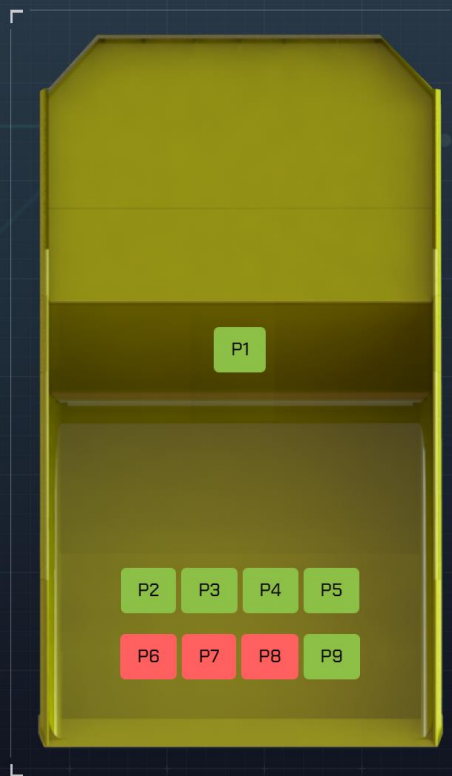


Cycle Analytics

Navigation

-  Home
-  Cycles Analytics
-  Asset Management
-  Live Vision
-  Logout

Position	Sensor ID	Connection	Thickness	Battery
P1	M454P1		 20mm	80%
P2	M454P2		 16mm	80%
P3	M454P3		 14mm	80%
P4	M454P4		 16mm	70%
P5	M454P5		 16mm	80%
P6	M454P6		 6mm	70%
P7	M454P7		 6mm	70%
P8	M454P8		 6mm	70%
P9	M454P9		 14mm	80%



Asset Management

- Navigation
- Home
- Cycles Analytics
- Asset Management
- Live Vision
- Live Camaras
- Library
- Logout

Zone A



SHOW TAKE PIC A

Zone B

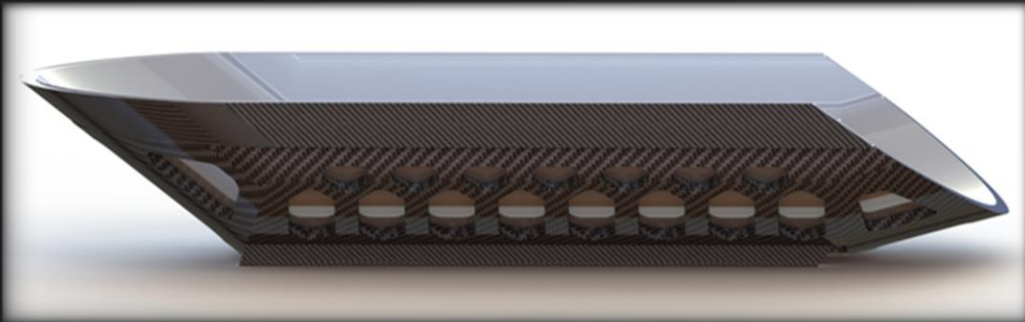
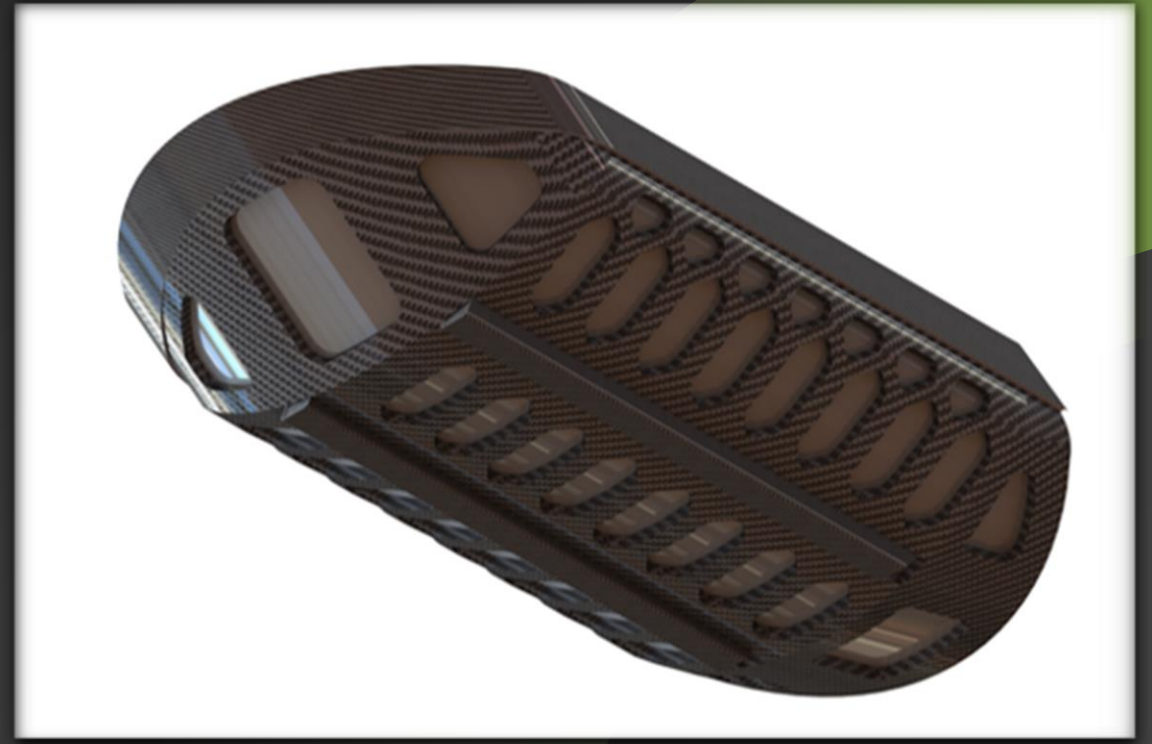


SHOW TAKE PIC



Live Vision

R&D – Fibreglass Dump Body



New Factory – Australia HQ

AUD 10m Investment

May 2023

Rubber and Fibreglass



Challenges & Opportunities



Labor Shortage

- Domestic Labor
- Special VISA for unique staff

R&D Collaboration

- University/Government/Private

Chilean Mining Hub (CMH)

- Soft Landing
- Ecosystem integration



DURATRAY



NEXUS MINE